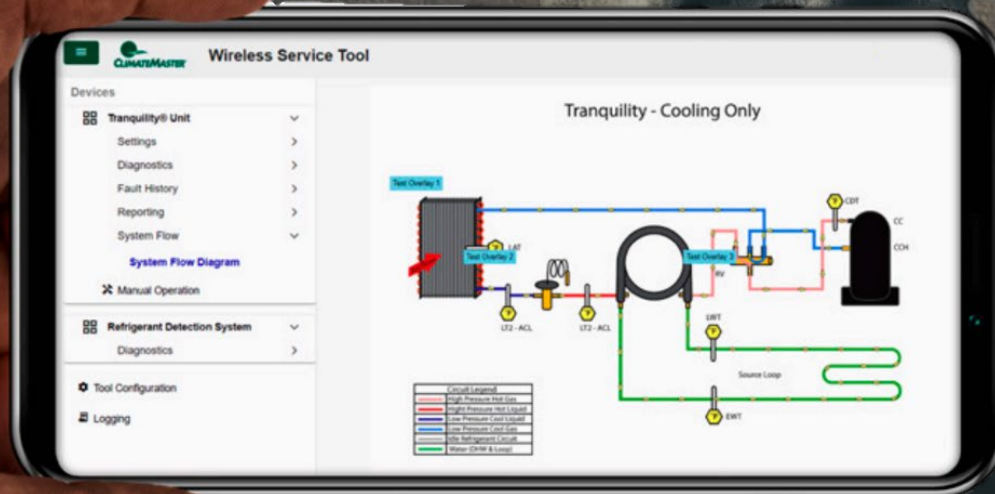


# STREAMLINE INSTALLATION COSTS

Low GWP Vertical Stack + Smart Wireless Service





# YOUR PRESENTERS

**AMANDA DIAZ**

Ultimate Control Freak



**CALEB FOX**

Professional Cat Herder



# TECHNOLOGY

## SIMPLIFIED BY DESIGN

### VERTICAL STACK PRODUCTS

Low GWP Vertical Stack  
WSHP series offers  
substantial installation cost  
savings while promoting  
environmental responsibility



### WIRELESS SERVICE TOOL

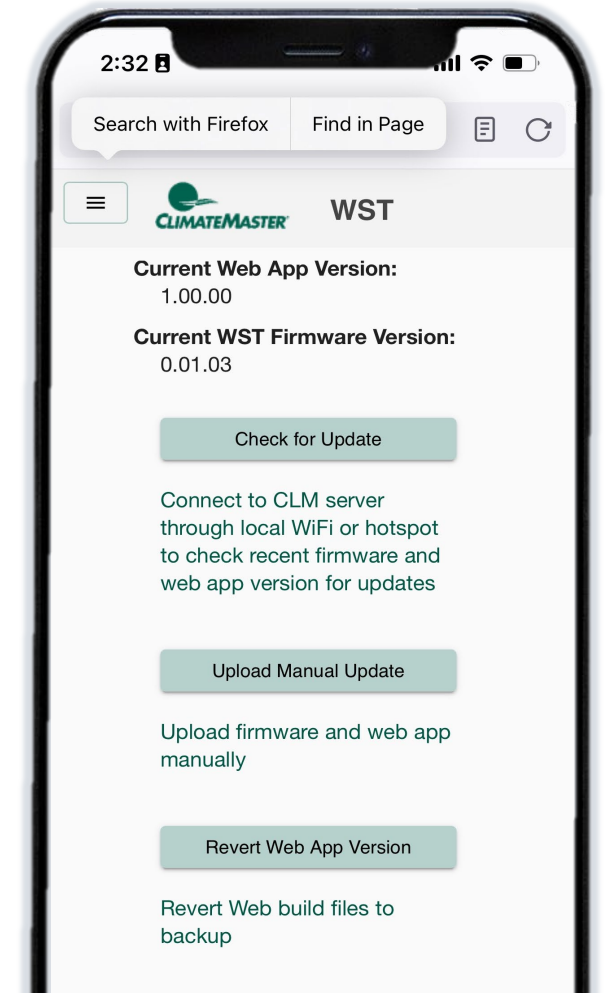
Streamline startup and  
commissioning while  
reducing installation and  
maintenance costs with  
advanced wireless  
technology



# WIRELESS CONNECTIVITY MADE SIMPLE



- Backward Compatible
- Multiple Connection Points Supported
- Portable & Compact Design
- No External Power Needed
- Wireless Operation with Enhanced Security
- Distinct SSID for Easy Identification
- Customizable Interface
- Over-the-Air (OTA) Updates



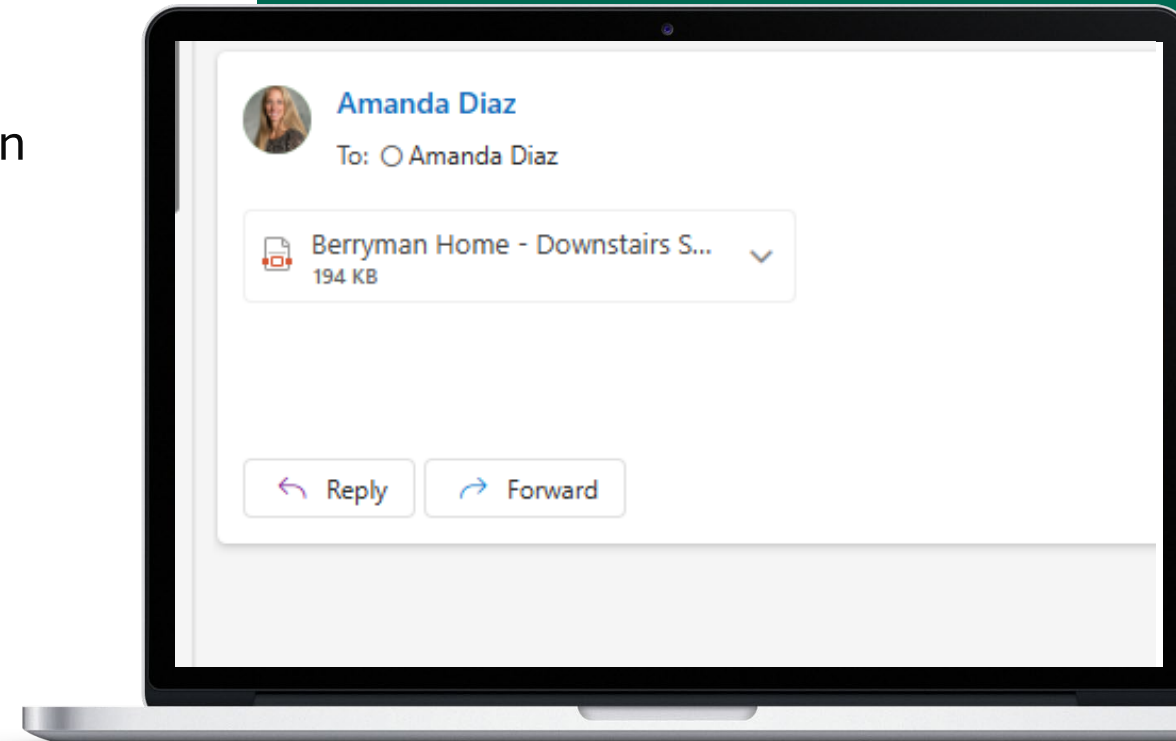
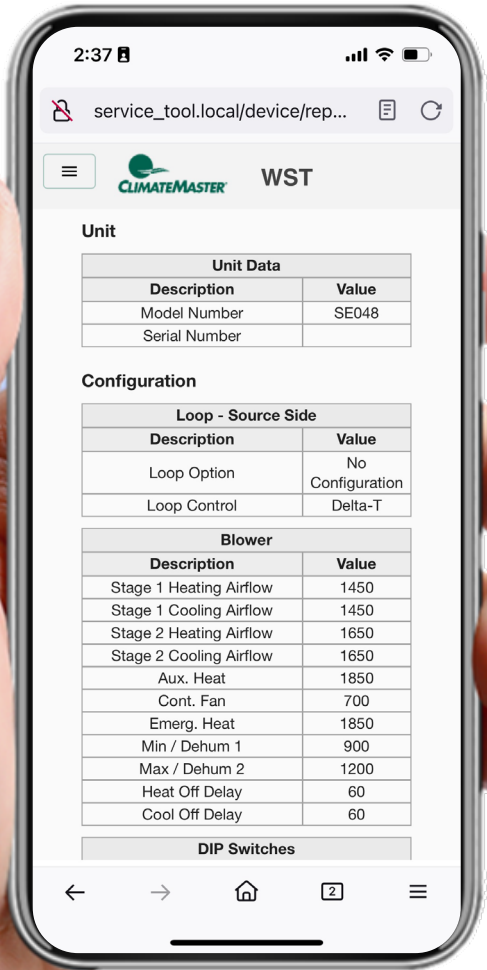
# INSTALLATION COST SAVINGS WITH THE WIRELESS SERVICE TOOL

## COMMISSIONING ADVANTAGES:

- Real-Time Operational Insights
- Assured Optimal Performance
- Instant Start-Up Report Delivery

## SIMPLIFIED INSTALLATION PROCESS:

- Effortless WSHP Setting Updates
- Optimized Airflow and Waterflow Customization
- Seamless Refrigerant Detection System (RDS) Configuration





# ENHANCING EFFICIENCY FOR MAINTENANCE

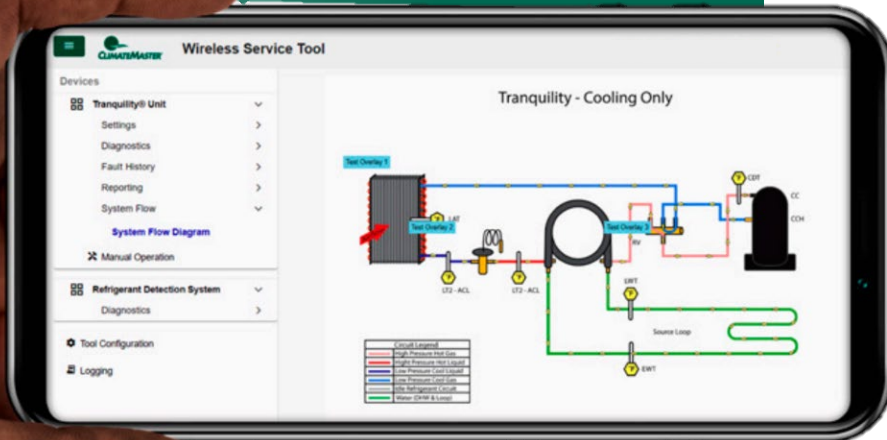
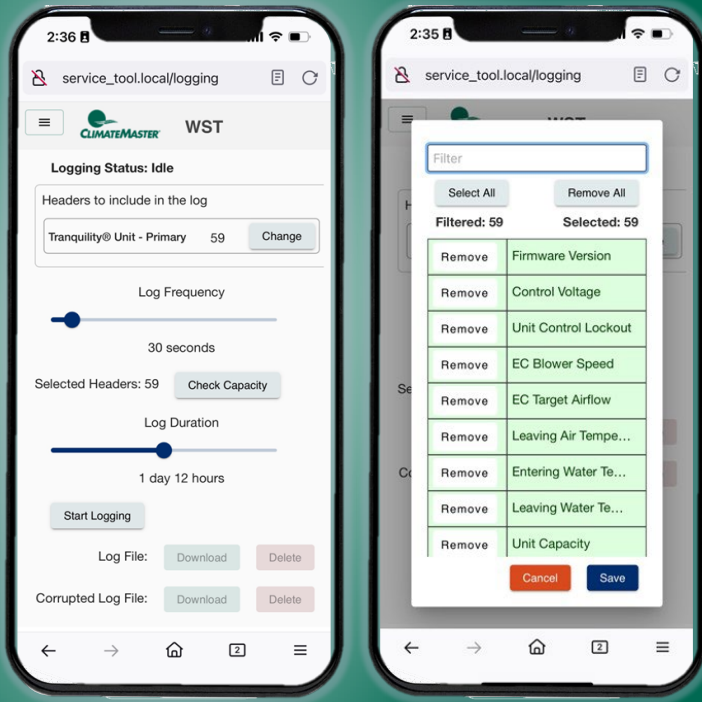
**Streamlined Troubleshooting:** Access real-time operational data to quickly identify and resolve issues.

**Manually Operate WSHP:** Quick access to manual operation for running equipment

**Interactive Visual Flow Diagrams:** Graphical system representations display live data, making complex systems easy to understand.

**Comprehensive Fault History:** Detailed logs capture critical system data at the time of failure, aiding faster diagnosis and resolution.

**Customizable Data Logging:** Tailor data capture frequency and parameters for in-depth, precise analysis of system performance.



# NEW LOW GWP VERTICAL STACK WSHP



## KEY FEATURES:

- Contains environmentally friendly Low GWP R-454B refrigerant
- Compact design, ideal for space-limited multifamily installations
- Sizes from 1/2 ton to 3 tons
- Exceeds ASHRAE 90.1 efficiency standards
- Removable chassis for easy installation and maintenance
- Quiet operation via double-isolated compressor mounting
- Eight safety features
- Field-convertible supply, return, and riser configurations
- Communicating Controls for WST access
- Highly efficient EC fan motors

## KEY OPTIONS:

- Modulating Water Valves
- Hydronic Heating Coil
- Auto Flow Regulators
- Motorized Water Valves

# APPLICATION SIMPLICITY/FLEXIBILITY

## QUICK CHASSIS REPLACEMENT

Complete refrigeration portion of the system can be swapped out in minutes

## SERVICE FRIENDLY

Removal and replacement installation done with common hand tools

## MINIMAL DISRUPTION

One tech can do the job

## COMFORT RESTORED

System can be back up and running in the time it takes to get a cup of coffee!

Drywall Stage:  
Units in floors  
above + below



Walls finished  
with chassis  
pulled out



Finished Room





## BENEFITS OF WST SPECIFIC TO VERTICAL STACK PROJECTS

- ✓ Reduced complexity in installing WSHP systems
- ✓ Faster project completion, reducing on-site labor costs
- ✓ Secure connection to configure products, access data, & manually operate via any mobile device

## WST BENEFITS TO TECHNICIANS – WITH ANY WSHP

- ✓ Effortless connectivity to WSHP
- ✓ Saves time and money during installation and commissioning process
- ✓ Improves troubleshooting efficiency
- ✓ Ensures latest software features with OTA updates

### Summary of Key Points:

- **Simplified Installation & Cost Savings**
- **Streamlined Maintenance to Reduce Downtime**
- **Seamless Integration of Technologies**