

A photograph of three construction workers in a large industrial space, likely a warehouse, installing a large, custom-built metal structure. One worker on the left is on a red step ladder, another on the right is on an orange JLG scissor lift, and a third is partially visible behind the lift. They are working on a large, dark metal frame with yellow insulation visible at the top. The background shows the structural beams and lighting of the warehouse.

VERSATILITY MEETS CUSTOM DURABILITY

BUILT TO LAST, PERFECT FOR RETROFITS AND NEW BUILDS

 **ClimateCraft®**

YOUR PRESENTERS

DON WEBBER

ACCESS Air Handler Guru



KIRK WHEELER

Custom Air Handler Aficionado





CLIMA[®]COOL[®]

Modular Chiller/Heater Systems




CLIMATEMASTER[®]

Water-Source Heat Pump Solutions



 **IEC[®]**
International
Environmental

Hydronic Fan Coil Solutions



ClimateCraft[®]

Custom Air Handlers

WHY CLIMATECRAFT CUSTOM AIR HANDLERS?

Flexibility

- Configurable to site conditions
- Construction materials
- Performance
- Footprint

Performance

- High static, low leakage applications
- Extreme duty

Reliability

- Designed for durability
- 40-year life expectation

Quality Design and Construction

- Thorough testing
- Talented engineers on-site to support

CLIMATECRAFT CUSTOM PRODUCTS



Outdoor Air Handler



Indoor Air Handler

ClimateCraft can often meet third party standards including:

- AHRI
- IBC Seismic
- Miami - Dade County
- ETL
- AMCA
- California OSHPD



Energy Recovery Units



**Stand-alone Fan Array Towers
Replace Existing AHU Fans**



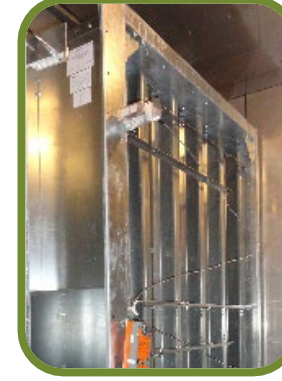
**ACCESS™ Site Assembled AHU
Replacement Solution**

ClimateCraft

INTEGRATED MANUFACTURER

We are an Integrated manufacturer of the custom air handler and major components

- HW & CW Coils
- Fan array towers
- Access doors
- Wall and roof panels
- Bases



Design

Build

Test

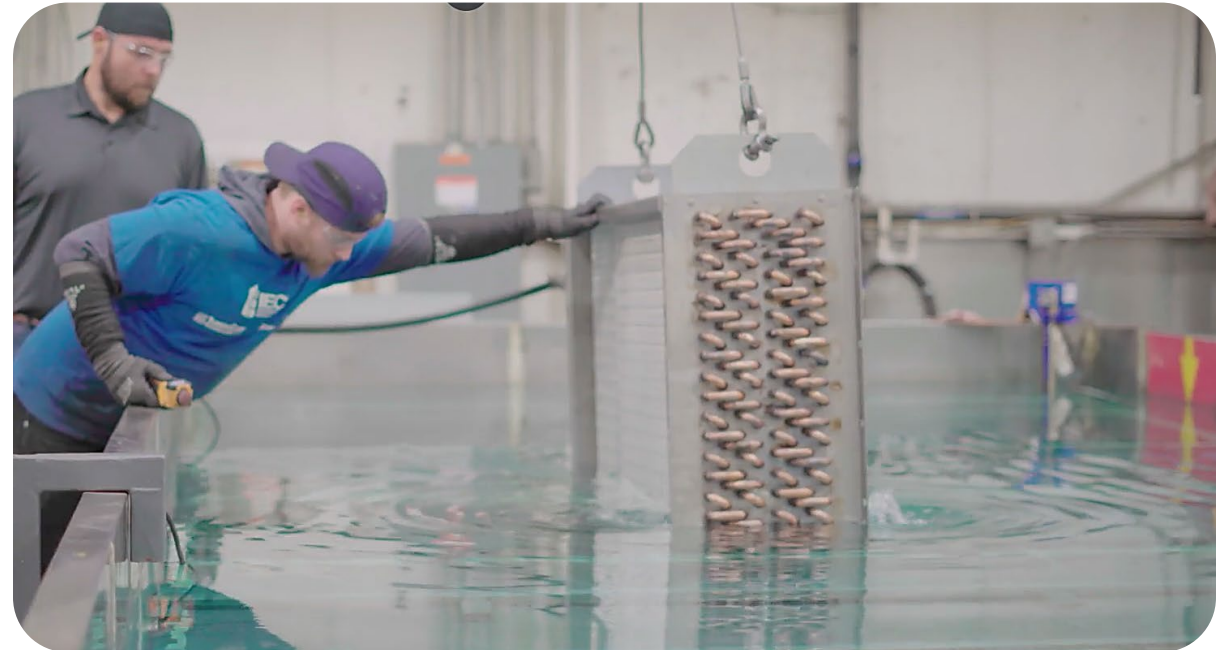
Warranty

TESTING

- ✓ **Pressure Testing**
(Factory and Field)
- ✓ **Fan Vibration** (Factory)
- ✓ **Airflow Testing** (Factory)
- ✓ **Sound Testing** (Factory)

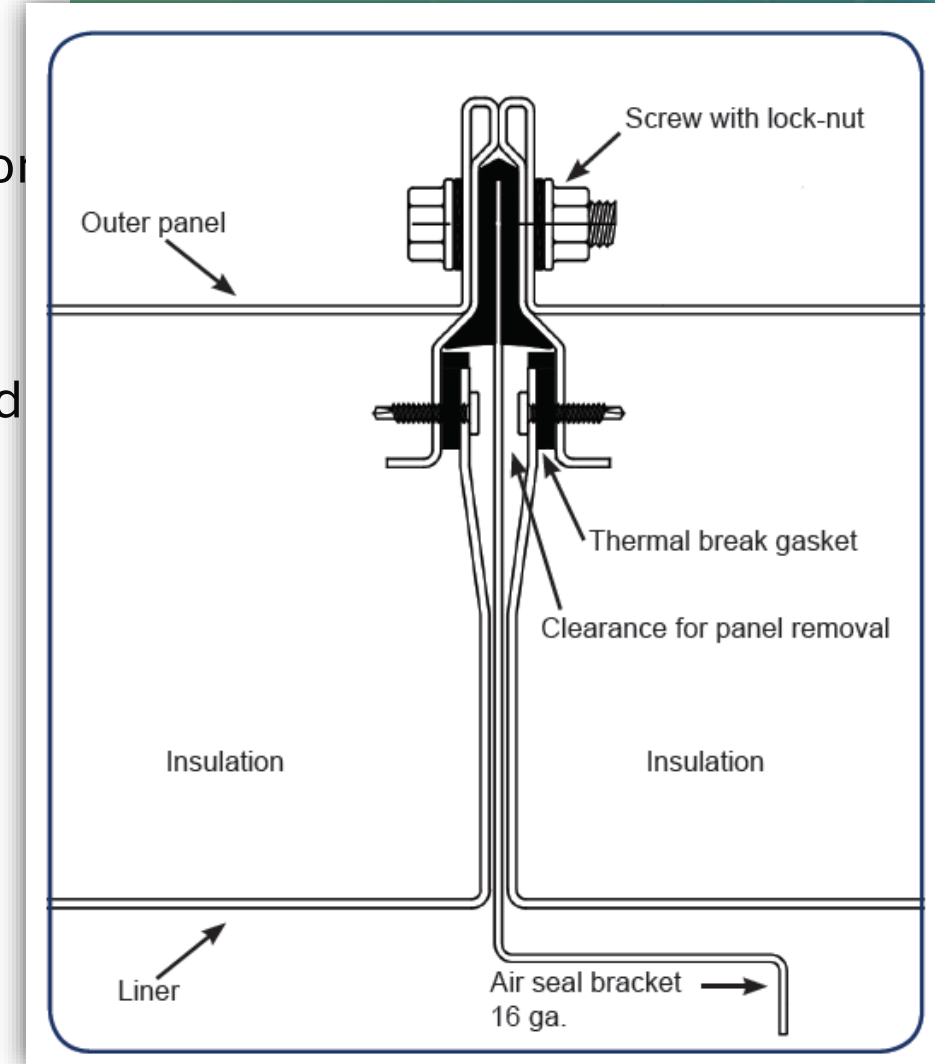
Representatives are invited to visit our factory with customers!

Project discussions and unit designs
Unit inspection
Witness testing
Training
Plant tours



STRONG PANELS / FLEXIBLE CONSTRUCTION

- Frameless design & unique air seal / bulkhead design
- Industrial EPDM gaskets, not caulk to hold pressure
- Roll formed to be exceptionally strong with tight tolerances for precise fit to hold pressure
- 4-layers of 16-ga metal at the joint for strength
- ASHRAE/ANSI Standard 111 Leakage Class 5 rating measured accordance with AMCA Standard 210
- L/200 deflection at casing operating design pressures
- Thermal break construction throughout
- Thermal break construction throughout
- 2", 3", & 4" walls available (R-8.4 to R-26.4 choices)
- Galvanized steel, stainless steel, and aluminum panels
- Injected foam and fiberglass insulation available
- Mechanical fastened or continuously welded floors





CUSTOM COLORS AVAILABLE

Owner specified colors to match the building, local environs or meet a municipal building code requirement



ACCESS

Site Assembled Custom Air Handlers



ACCESS™ WHAT IS IT?

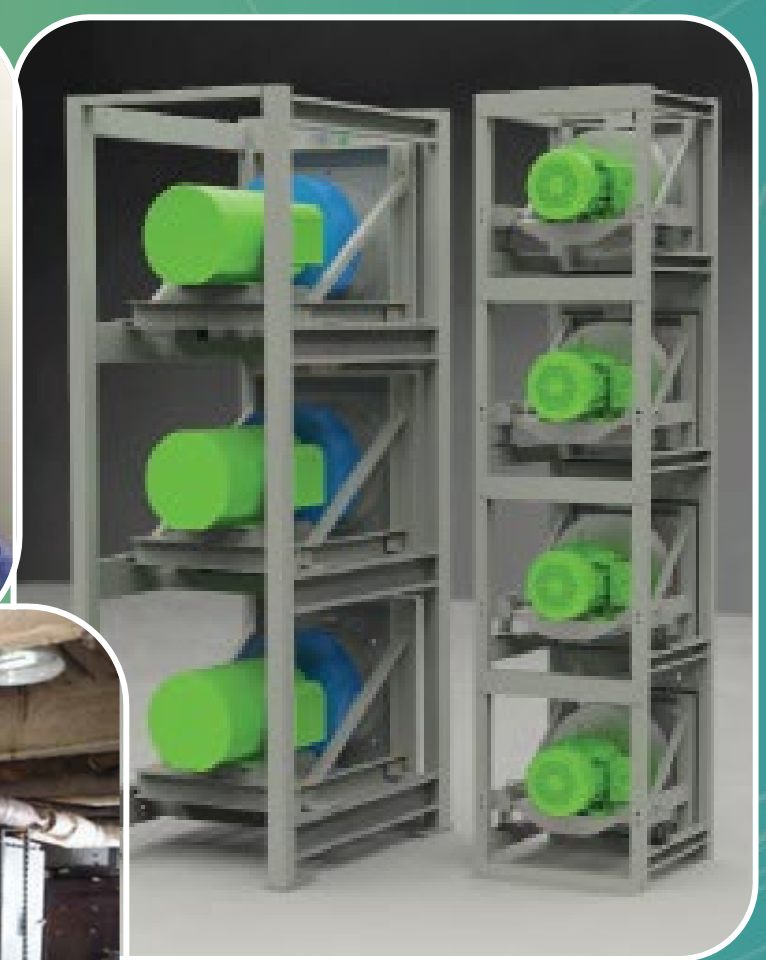
ACCESS™ is an unparalleled **process** for custom engineered and manufacturing air handling units that are factory-made and **field-assembled** to meet the unique requirements of the **space and building ingress.**

8-Step Process

1. Analysis*
2. Planning*
3. Design*
4. Estimating*
5. Logistics*
6. Shipping*
7. Assembly*
8. Testing?

***No Shortcuts!**

CONSIDERATIONS WHEN SELECTING ACCESS™



ClimateCraft

CUSTOMIZED SHIPPING SOLUTIONS



Dedicated Vans or Soft Top Trucks
Direct to Off Loading Destination





ClimateCraft

HOW WE MAKE IT POSSIBLE

Ease of Installation

- ✓ Detailed documentation
- ✓ Packaging enables logical assembly
- ✓ Warranty and certifications



A LEGO-themed construction scene. In the background, a yellow wall is under construction with a grey ladder leaning against it. A LEGO minifigure wearing a white hard hat and a yellow shirt is standing near the ladder. In the foreground, another LEGO minifigure wearing a yellow hard hat and a yellow shirt is holding a clipboard. To the right, a red LEGO box labeled 'ClimateCraft' is open, and a minifigure with black hair, a pink shirt, and blue pants is standing next to it. The box contains a stack of white papers, the top one of which is titled 'Wall Panel Installation Instructions'.

OUR PACKAGING MAKES ASSEMBLY STRAIGHT-FORWARD

- Grouped by like-parts, panels, doors,
- Each piece is labeled and listed
- Brought in on skids or by piece part

ACCESS™ ASSEMBLY
is simple and straightforward
with the training and tools
ClimateCraft provides!

GRAPHIC DETAILED REFERENCE MANUAL

FOR THE INSTALLING CONTRACTOR



Wall Panel Installation Instructions

FIELD WORK INSTRUCTION

WALL PANEL INSTALLATION INSTRUCTIONS

Apply double sided tape and roof rail gasket to corner post. Make sure holes in gasket line up with holes in corner post.
Gasket Part Number:
PGSK-005-001



Leave approximately 6 inches of gasket hanging on the top of the corner post.



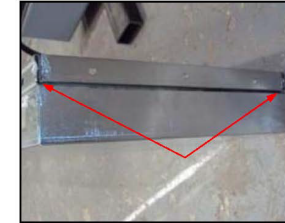
Place corner post according to drawings. Use 5/16" x 1" bolt and washer combo to secure post to base frame.

NOTE: Always start in a corner and finish at a corner when installing wall panels. Never meet in the middle.

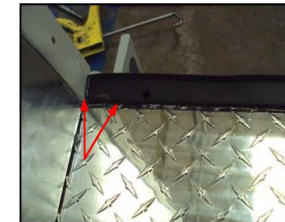


Page 2

Caulk in corners of panel on the bottom of the panel only!



Caulk in corner and along gasket the length of the panel that will be bolted to corner post.



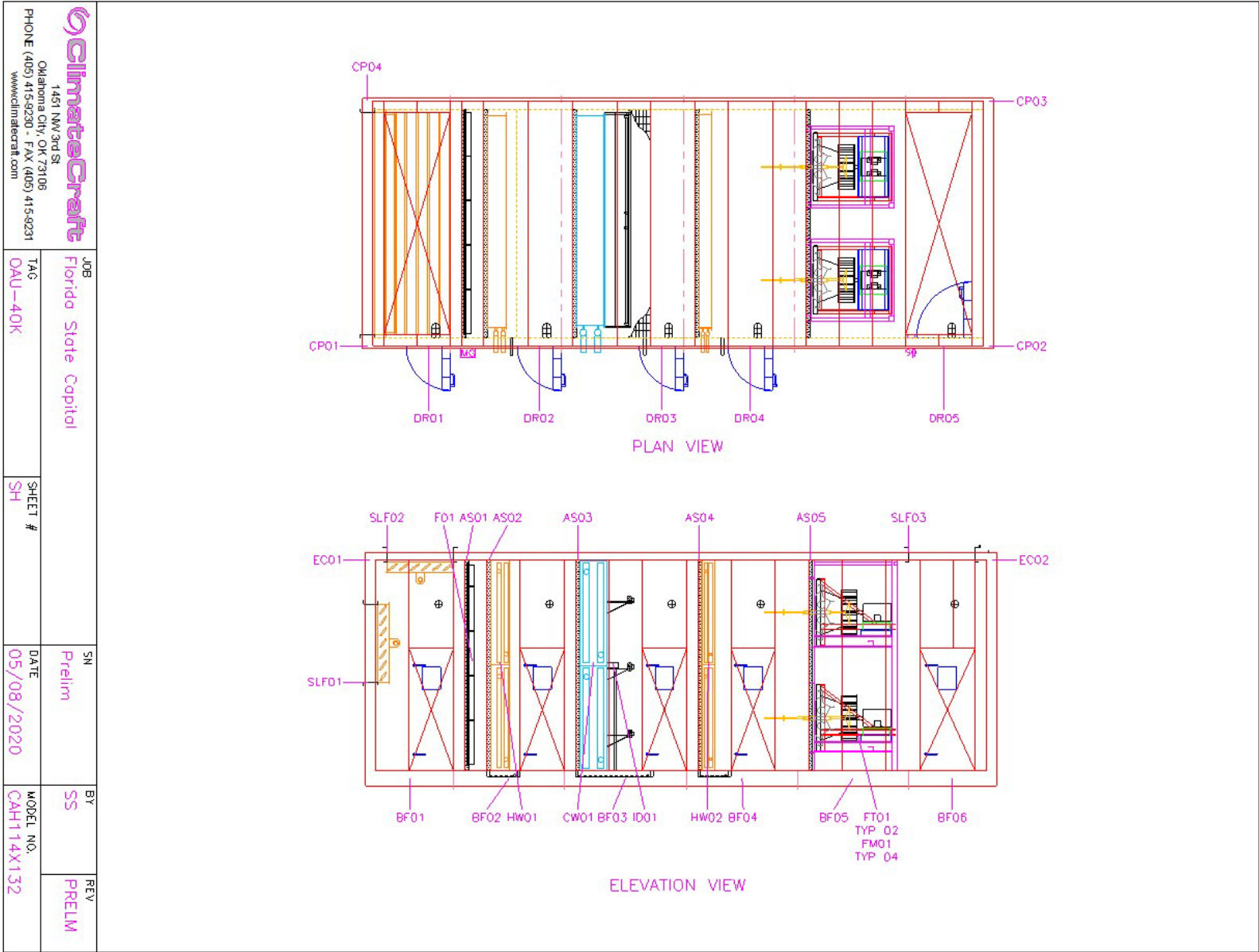
Place panel with the caulk side down on the gasket and clamp it to adjacent panel or corner post.
Use line-up bar to align holes in panels.



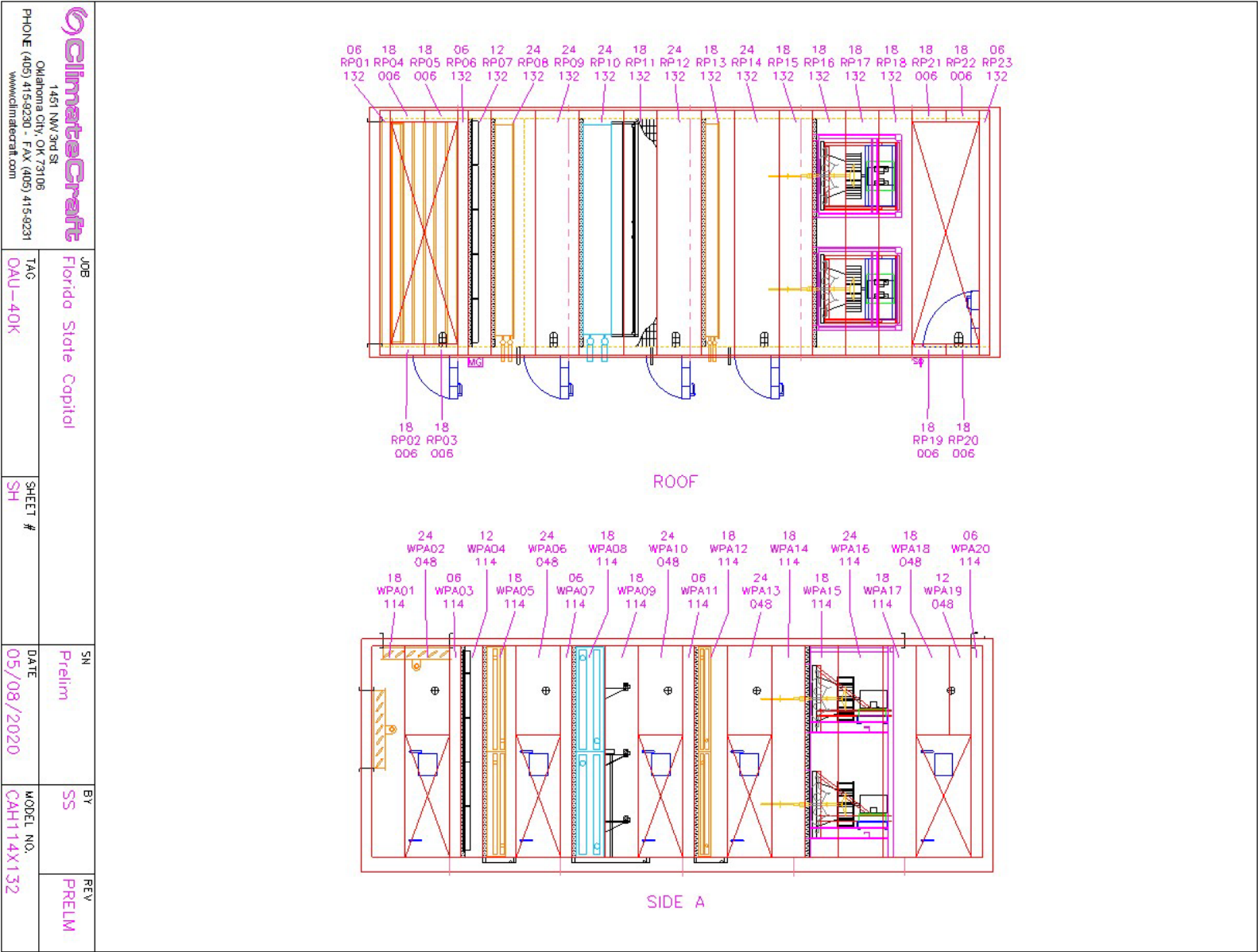
Page 3



Panel Map Example



Panel Map Example



LABELED COMPONENTS

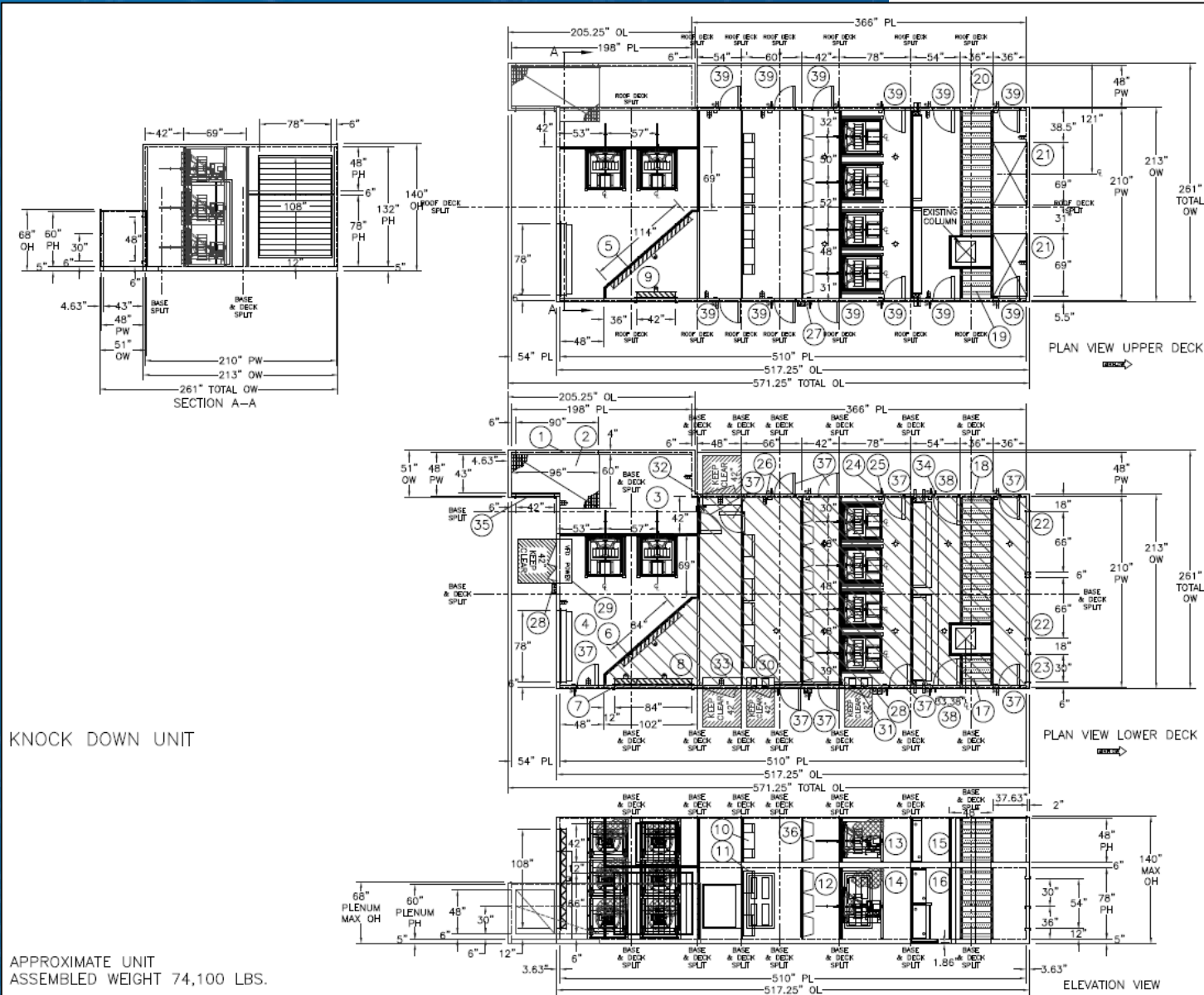


COMPLEX REPLACEMENT

151,000 TOTAL CFM

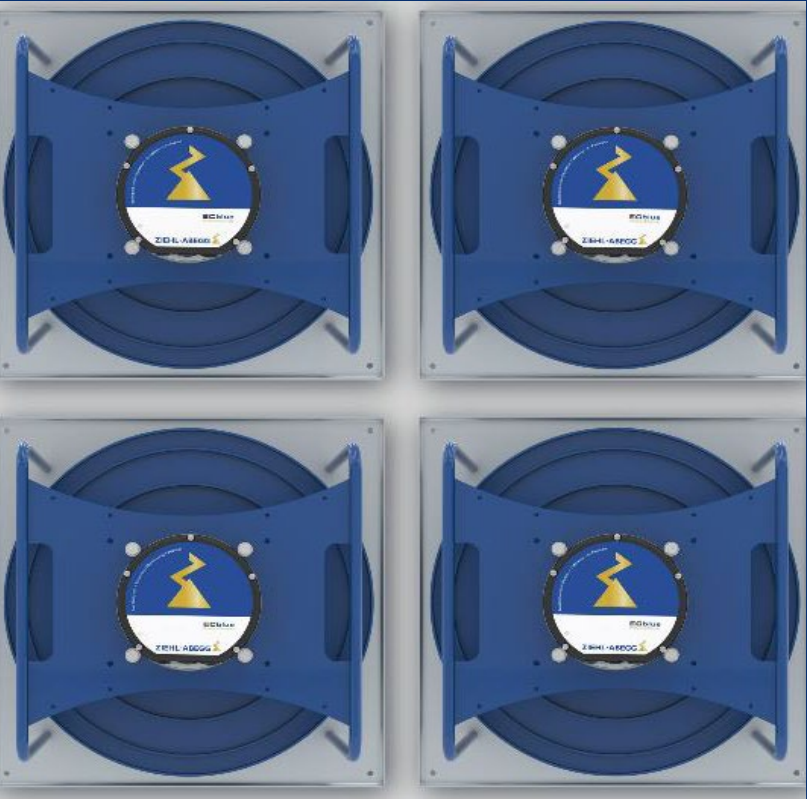
44 – Containers
5 – Trucks

650 Hours Est.
Assembly Time



FAN MATRIX FAN ARRAYS





CLIMATECRAFT FAN ARRAY OPTIONS

ECM FAN ARRAY

For lower airflow and lower static pressure applications, ECM fan arrays can reduce space and weight with integral VFDs within the ECM motors.

SMALL DIAMETER FAN ARRAYS

When space is an issue, smaller diameter fans can deliver a compact solution.

LARGE DIAMETER FAN ARRAYS

Fan arrays are built for efficiency, redundancy and longevity.

THREE-POINT VIBRATION ISOLATION

**Two Support
Springs**



**Thrust Restraint
Spring**



**Seismic Restraint and
Shipping Tie Down**



NO ADJUSTMENT REQUIRED

FanMatrix Options

CAN FURTHER OPTIMIZE PERFORMANCE

BalanceStream® Technology

Allows unloading down to 10%

- Without surge
- Without cycling fans



Fan Removal Winch

- For easy servicing and maintenance



BALANCESTREAM™ INSTALLATION

 ClimateCraft®

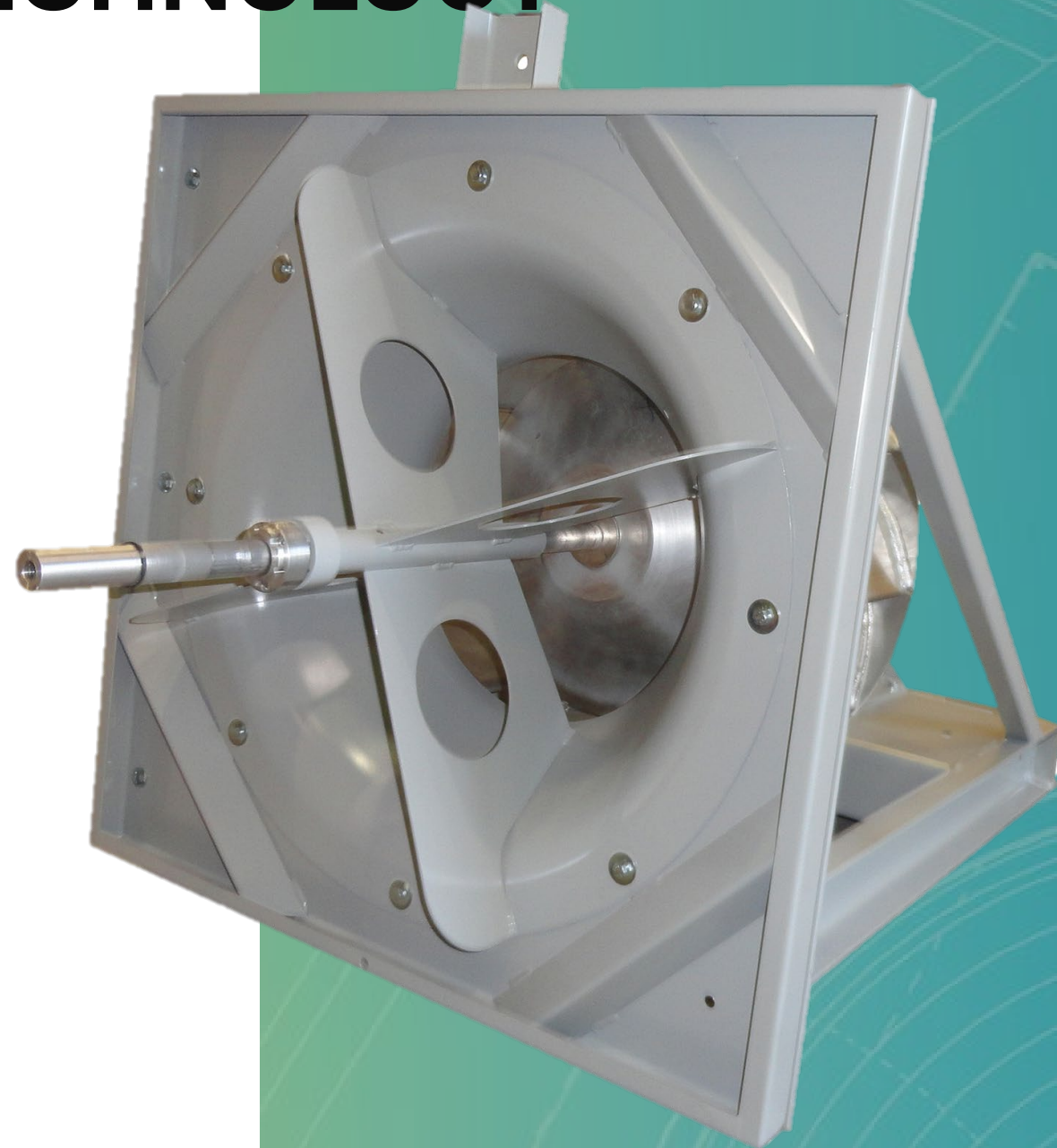
BALANCESTREAM™ TECHNOLOGY

An innovative technology for plenum fans that automatically adjusts the effective fan wheel width.

Allows fans to run stably and efficiently at part load at elevated static pressure

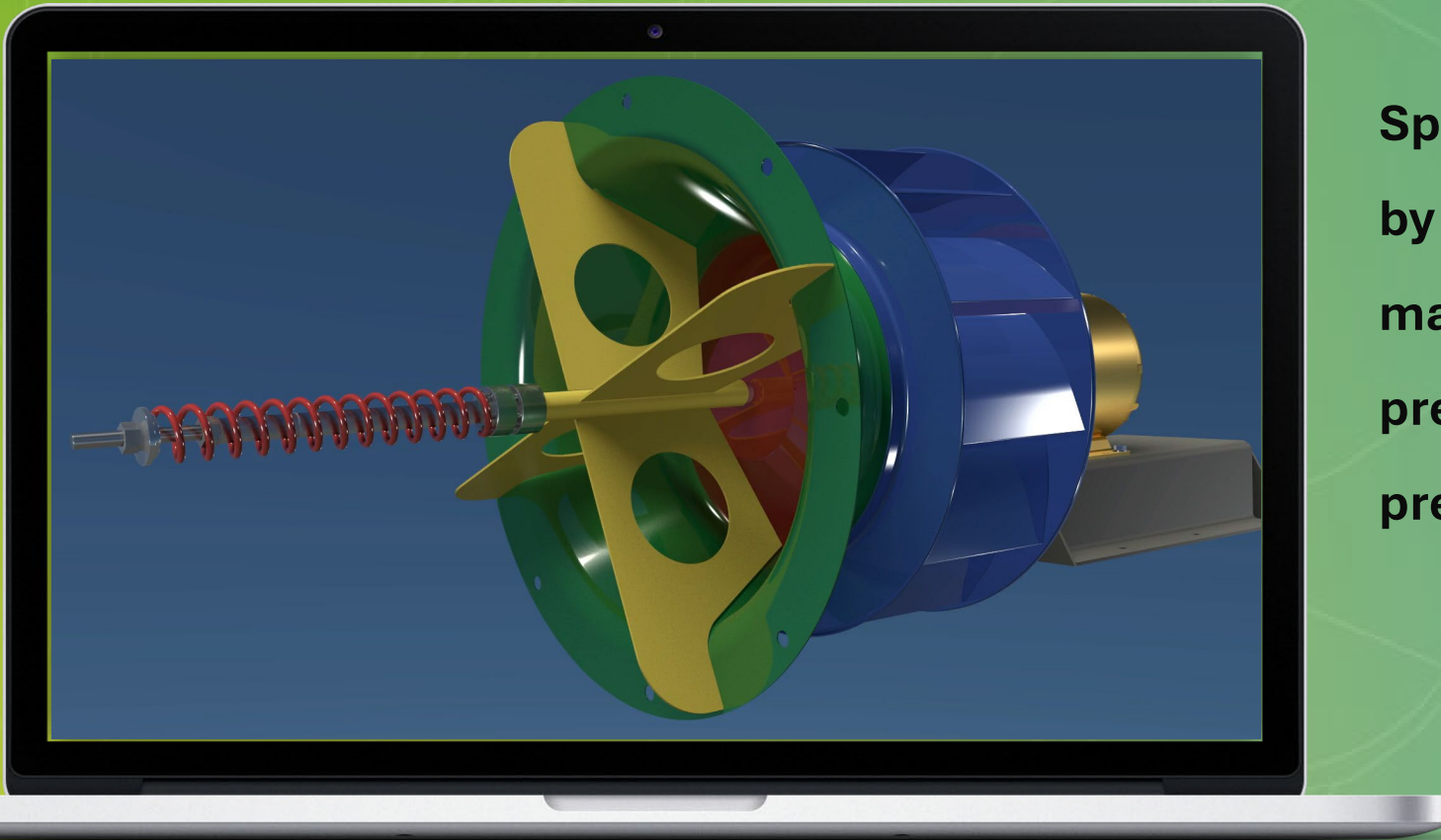
Allows unloading to 10%:
Without surge
Without cycling fans

Provides full shut-off with no back-draft damper



FANMATRIX™ WITH BALANCESTREAM™

VARIABLE PARTIAL WIDTH WHEEL



Spring actuated inlet cone controlled by the inlet velocity of the fan maintaining suitable outlet velocity to prevent surge and provide the static pressure required by the system

APPLICATIONS THAT BENEFIT FROM BALANCESTREAM

Applications with widely varying loads

Labs

Surgery suites

Lecture halls

Student centers

Theaters

Cafeterias

ClimateCraft